



**Safe Routes to School
Infrastructure Program
John Glenn Middle School
Bedford, MA**

25% Design Public Hearing

February 11, 2016



PLAN | PERMIT | DESIGN | CONSTRUCT



SRTS John Glenn Middle School



- 100% Funding: P-P-D-C
- Town Acquires Right-of-Way
 - Uniform Relocation Act
- Program Goals
 - Improve Safety & Mobility
 - Encourage Children to Walk & Bike

SRTS John Glenn Middle School Planning Assessment

John Glenn Middle School Bedford, Massachusetts

Safe Routes to School Infrastructure Program



Massachusetts Department of Transportation (MassDOT)
Office of Transportation Planning



Preliminary Assessment

April 3 2015

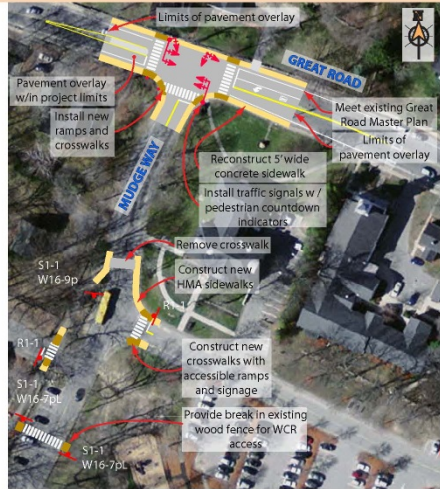
MassDOT
Massachusetts Department of Transportation



KEY	PROPOSED IMPROVEMENT	FEASIBILITY	SAFETY/ MOBILITY BENEFIT	COST
	Proposed SRTS Infrastructure Project			
SRTS	Reconstruct Sidewalks and Install Traffic Signal with Pedestrian Countdown Indicators at Great Road and Middle Way Construct Sidewalk Connection Between High School and Middle School	High	High	Moderate
	Recommendations to be Pursued by the City or through Other Funding Sources			
1	Construct Sidewalk on Railroad Avenue from the Reformatory Branch Rail to South Road (Currently in Design)	High	High	High
2	Improvements to Great Road Crossing at Bacon Road and Hillside Avenue	High	High	Low
3	Construct Sidewalk on Bacon Road / Crescent Avenue / Hartford Street	Moderate	Moderate	High
4	Construct Sidewalk and Install Lighting on School Way	Moderate	Moderate	High
5	Implement Drainage and Grading Improvements at Great Road and Loomis Street	Moderate	Moderate	Moderate

MassDOT Figure 4: Location of Recommended Improvements
Massachusetts Safe Routes to School Infrastructure Team
Page 24 of 34

SRTS John Glenn Middle School Planning Assessment

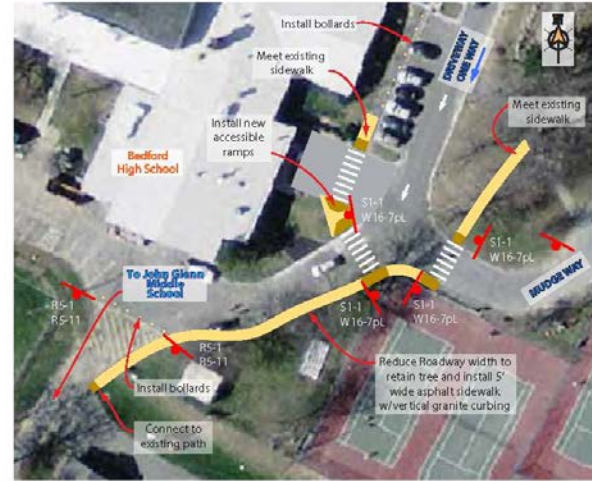


RECOMMENDED SCOPE OF WORK AND CONCEPTUAL COST ESTIMATE:

5' WIDE CONCRETE & ASPHALT SIDEWALK & GRANITE CURB (INCLUDING RAMPS)	= \$ 111,000
PAVEMENT MILL AND OVERLAY	= \$ 32,500
SIGNS & STRIPING	= \$ 8,000
LANDSCAPING	= \$ 6,500
TRAFFIC CONTROL/FIELD OFFICE	= \$ 77,500
DRAINAGE MODIFICATIONS	= \$ 27,000
UTILITY POLE RELOCATION	= \$ 30,000
TRAFFIC SIGNAL	= \$ 150,000
+/- 25% CONTINGENCY & CONSTRUCTION ENGINEERING	= \$ 110,500
TOTAL	= \$ 553,000



Figure 5 : Reconstruct Sidewalks and Install Traffic Signal with Pedestrian Countdown Indicators at Great Road and Mudge Way



RECOMMENDED SCOPE OF WORK AND CONCEPTUAL COST ESTIMATE:

5' WIDE ASPHALT SIDEWALK & GRANITE CURB (INCLUDING RAMPS)	= \$ 101,000
SIGNS & STRIPING	= \$ 8,500
LANDSCAPING	= \$ 4,500
DRAINAGE IMPROVEMENTS	= \$ 12,000
TREE REMOVAL	= \$ 3,000
BOLLARDS	= \$ 11,500
+/- 25% CONTINGENCY & CONSTRUCTION ENGINEERING	= \$ 35,000
TOTAL	= \$ 175,500



Figure 6 : Construct Sidewalk Connection Between High School and Middle School

SRTS John Glenn Middle School Proposed Improvements

Design Components

- 10' multi-use trail
- Tree Preservation
- ADA Compliance
- Pavement Markings
- Signage



40 Elm Street
Lawrence, MA 01840
© 1976-2016
TheGlennMiddleSchool.com

320 Center Street
Unit 201, PO Box 249
Bedford, MA 01824

Not to Scale
February 11, 2016

Legend	
■ Asphalt Sidewalk/Path/Roadway	■ Stamped Brick Crosswalk
■ Concrete Sidewalk/Driveway	■ New Traffic Signal
■ ADA Wheelchair Ramp	
■ Grass/Landscaped Area	

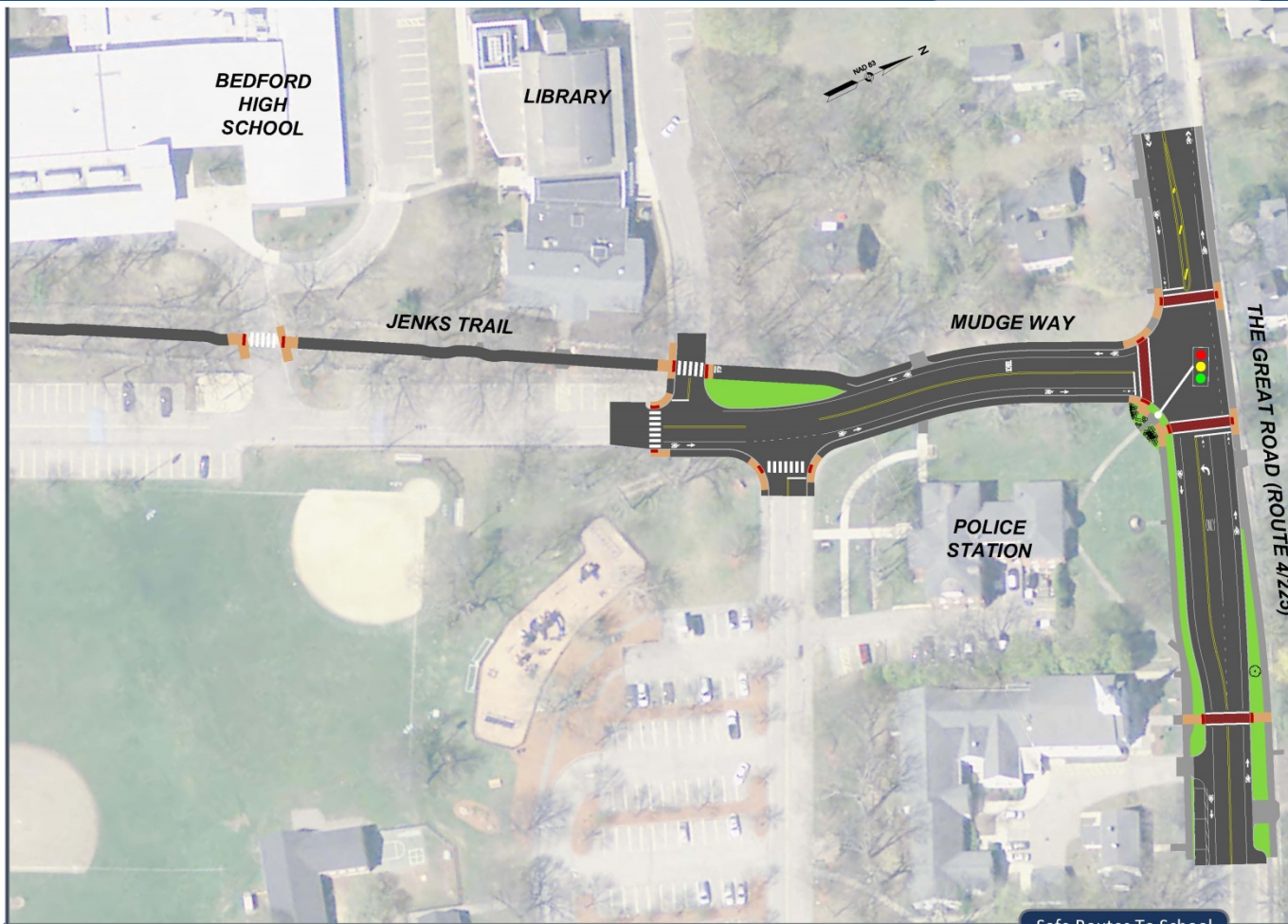
Safe Routes To School

John Glenn Middle School
Bedford, Massachusetts

PLAN | PERMIT | DESIGN | CONSTRUCT



SRTS John Glenn Middle School Proposed Improvements



Design Components

- 10' multi-use trail
- Tree Preservation
- ADA Compliance
- Pavement Markings
- Signage

Great Road Master Plan

- Mudge Way Signal
- Complete Streets



65 Great Road | 381 Open Boulevard
Lawrence, MA 01840 | 978.681.1111
© 2016 TEC LLC | www.tec.com

Not to Scale
February 11, 2016

Legend	
	Asphalt Sidewalk/Path/Roadway
	Stamped Brick Crosswalk
	Concrete Sidewalk/Driveway
	ADA Wheelchair Ramp
	Grass/Landscaped Area
	New Traffic Signal

Safe Routes To School

John Glenn Middle School
Bedford, Massachusetts



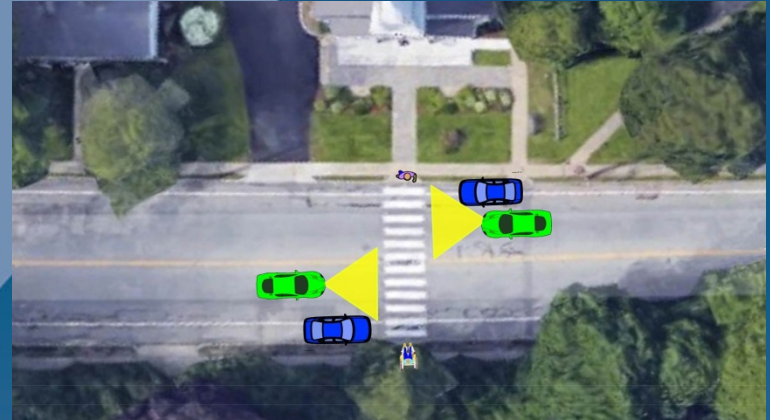
SRTS John Glenn Middle School Great Road Master Plan

Mudge Way Signal

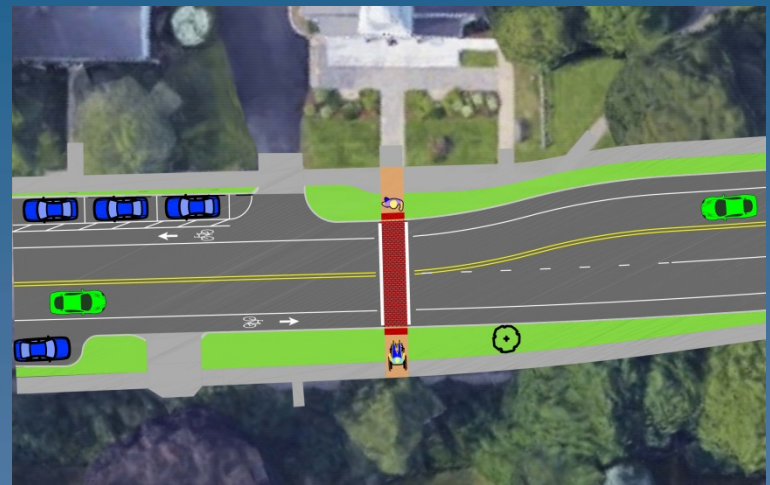
Complete Streets



Before



After



SRTS John Glenn Middle School Project Schedule

Next Steps

- 25/75% Design Submittal: Complete
- Design Public Hearing: Today
- 100% Design Submittal: March 1, 2016
- Town Meeting: March 2016
- PS&E Final Design Submittal: June 2016
- Town to Acquire Easements: August 2016
- Advertise for Construction: September 2016
- Begin Construction: Spring / Summer 2017

Current Construction Cost = \$1.0M

SRTS John Glenn Middle School

***COMMUNITY
FEEDBACK***

PLAN | PERMIT | DESIGN | CONSTRUCT

