



BEDFORD PUBLIC WORKS

SPRING 2019 UPDATE

APRIL 22, 2019



Public Works

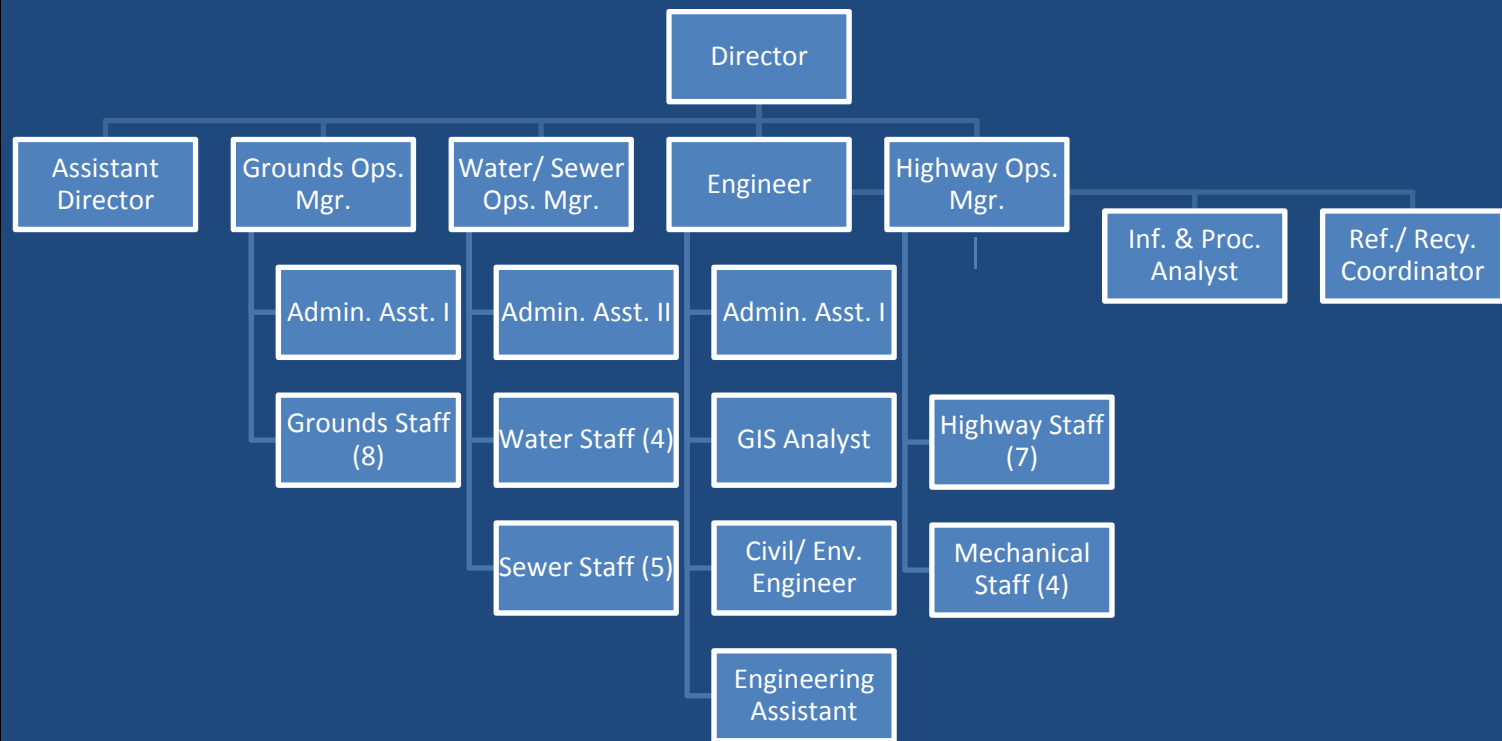
Agenda

- Administration
- Spring operations
- Projects



Public Works

Administration





Public Works

Administration

- Engineering
 - Project design
 - GIS
- Project management
- Water/ sewer/ 2nd trash cart billing
- Personnel
- Permitting
- Shawsheen grave purchase and interment





Public Works

Spring Operations

- Engineering
- Grounds
- Highway
- Mechanical
- Sewer
- Water
- Refuse/ recycling



Public Works

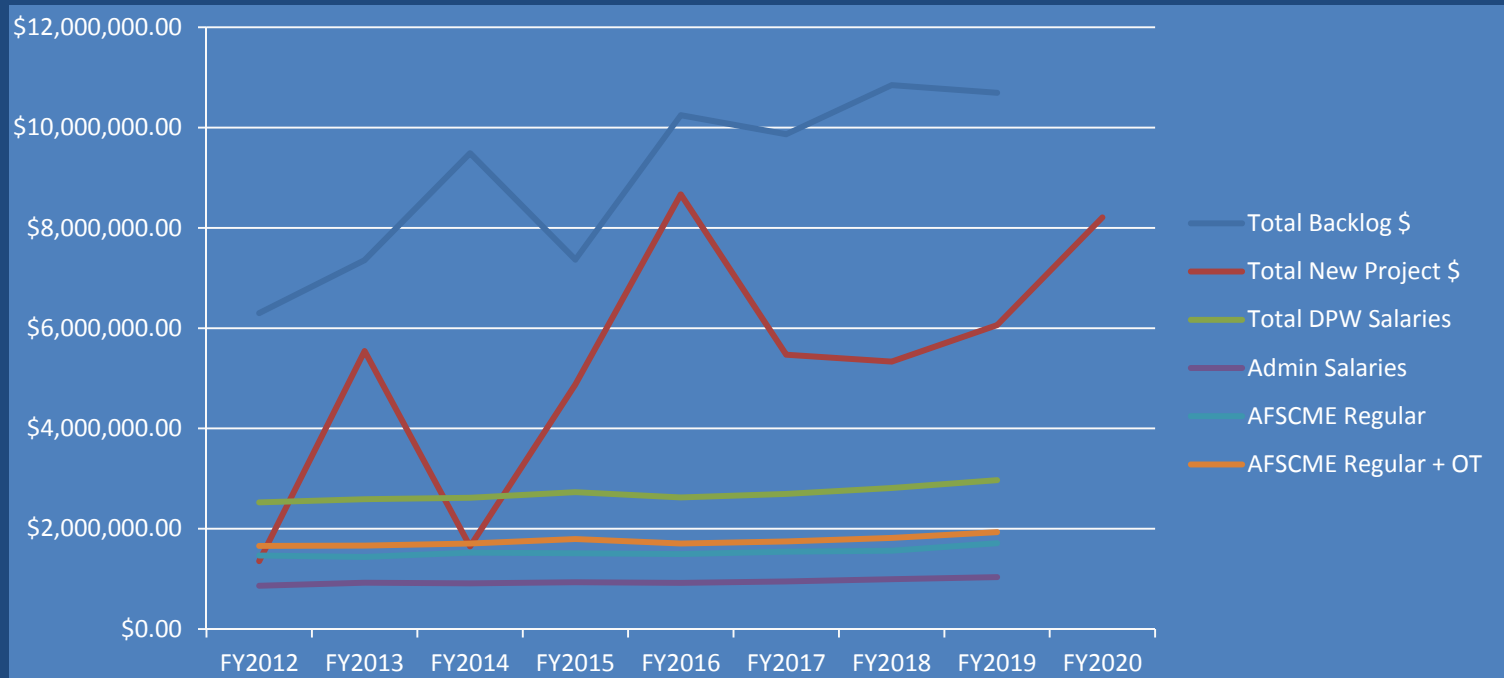
Projects

1. Health and Safety
 1. “Keep people safe”
 2. Water system resiliency
 3. Roadway safety
 4. Compliance with federal / state regulations
 5. Sewer system efficiency
2. Capital Maintenance
 1. “Maintain what we have”
 2. General municipal asset maintenance
3. Capital Improvements
 1. “Improve residents’ quality of life”
 2. Pedestrian/ bicycle improvements
 3. Recreation improvements
 4. Other improvements



Project Backlog

- EOY backlog (blue) vs. new projects (red)
- Reduce backlog by end of FY2020





Public Works

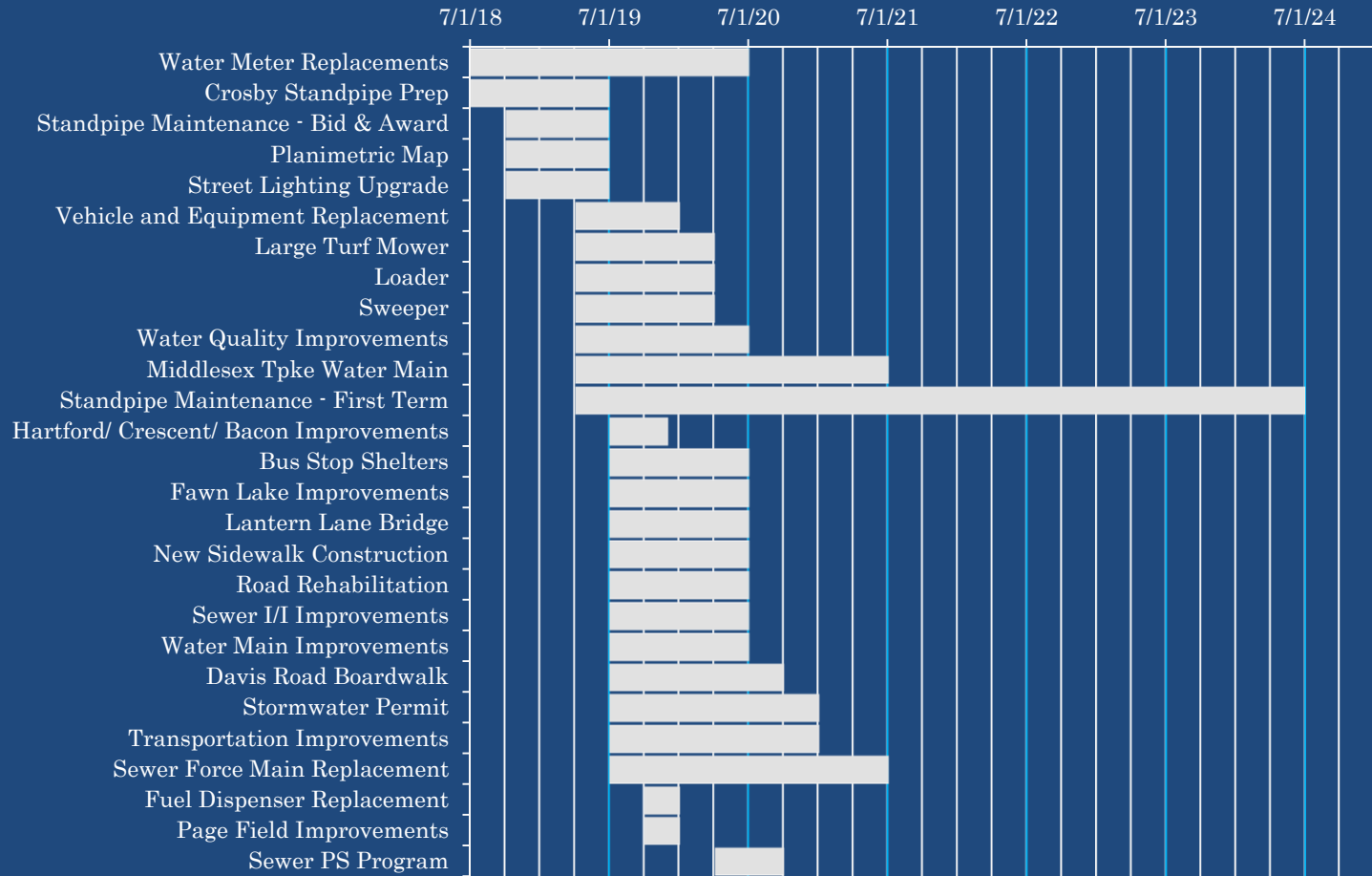
FY2020 Projects

| Category | Health and Safety | Capital Maintenance | Capital Improvements |
|---------------------------------|---|--|--|
| Road resurfacing/ chapter 90 | | <ul style="list-style-type: none"> Roadway pavement management program | <ul style="list-style-type: none"> New sidewalk construction |
| Tax levy | <ul style="list-style-type: none"> Stormwater template Water tank rehabilitation | <ul style="list-style-type: none"> Fuel dispenser replacement Vehicle and equipment replacement | |
| Bonded | <ul style="list-style-type: none"> Sewer inflow/ infiltration Water main improvements Water quality improvements & SCADA | <ul style="list-style-type: none"> Hardscape improvements (sidewalk repairs) Large equipment replacement (loader, turf large mower, & sweeper) | <ul style="list-style-type: none"> Transportation improvements – project design (North Road @ Chelmsford, Minuteman Bikeway, Great Road bike lane, other) |
| CPA | | <ul style="list-style-type: none"> Page baseball field rehabilitation | <ul style="list-style-type: none"> Fawn Lake improvements Lantern Lane pedestrian bridge |



Public Works

Project Schedules





Public Works

Spring Projects

- Bus stop shelters
- Cemetery expansion data collection
- Hartford/ Crescent/ Bacon neighborhood
- Vehicle and equipment replacement
- Sewer inflow/ infiltration removal
- Sewer pump station improvements
- Water meter replacement
- Water tank rehabilitation



Public Works

Bus Stop Shelters

- Accommodations for bicycle parking
- Two shelter locations
- Handicapped accessible
- South Road at Railroad Avenue
- Loomis Street at Great Road





Public Works

Cemetery Expansion

- Existing developed area at Shawsheen filling up
- Data collection for adjacent expansion
 - Needs review
 - Wetlands delineation
 - Consultant services
- Conceptual estimates





Public Works

Hartford/ Crescent/ Bacon

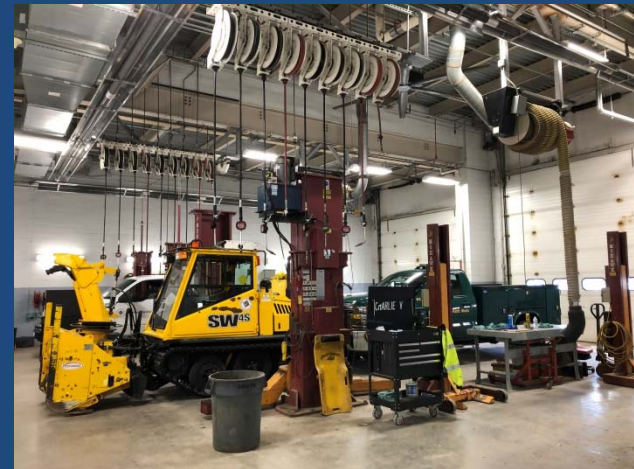
- Contract signed April 8
- Construction to start in spring 2019
- Transportation improvements
- Road reconstruction
- Raised crosswalks
- Sidewalks
- Drainage



Public Works

Vehicles and Equipment

- Vehicle specifications prepared and vehicles out to bid
- Bid openings April 25
- Deliveries starting July 1





Public Works

Sewer Inflow/ Infiltration

- Ongoing sewer inflow and infiltration reduction
- MWRA grant/ loan reimbursement
- 35 miles
- Flow isolation
- Dye testing
- Manhole/ main repairs





Sewer Pump Stations

- Davis – pump rehabilitation
- Meadowbrook – new pump station
- Old Billerica – new pump station
- Page – grinder pump
- Parker - generator
- Evans – generator
- Main (Great Road) – pump rehabilitations and generator



Public Works

Water Meter Replacement

- Contract signed April 8
- Work to start in May
- ~4,500 primary meters
- ~1,200 secondary meters
- ~5,000 sump pump inspections
- Close coordination with Bedford PD



Public Works

Water Tank Rehabilitation

- Contract to be signed April 22
- Five-year contract with three three-year extensions available
- Year one work:
 - Crosby – \$804,547
 - Interior/ exterior painting
 - Safety improvements
 - Pine Hill - \$2,547
 - Safety improvements
 - Reeves - \$124,296
 - Mixer
 - Safety improvements



Public Works

Questions

