

Many Thanks to over a Dozen Volunteers on Bedford Trails Day

Many thanks to Bedford residents, members of the Bedford Trails Committee and DPW employees who successfully improved our trails Saturday morning, May 11. Originally organized by Ralph Hammond, with extensive planning and coordination by Kristin Dowdy of Bedford DPW, the effort focused on three trail projects around Bedford. Thanks also go to Richard Krusemark, photographer, for the many beautiful pictures.

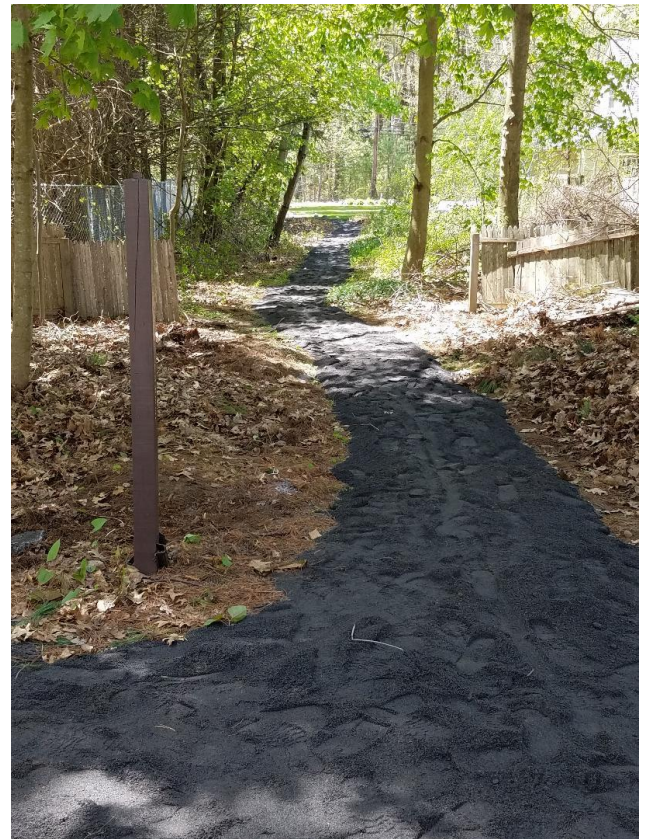
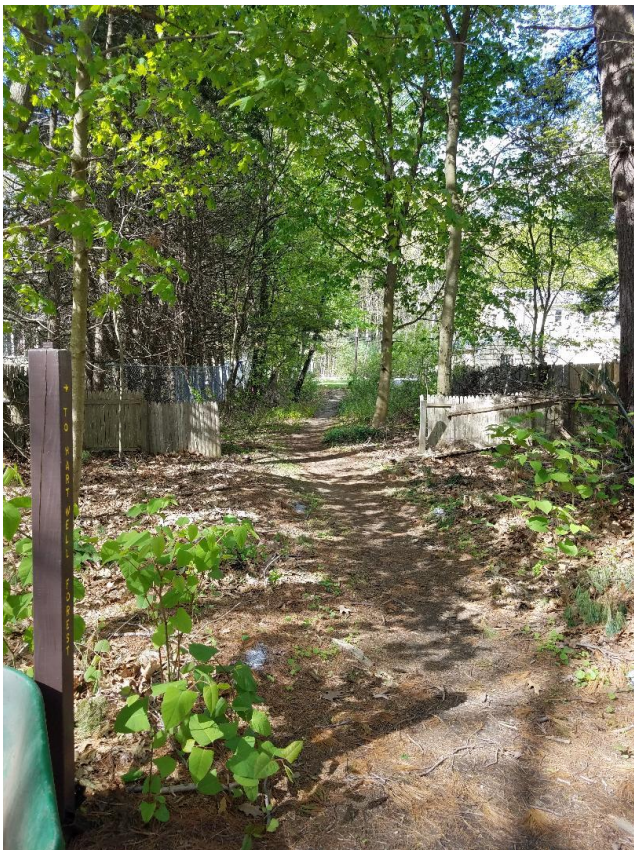
Please also check the Bedford Trails Google Group website if you'd like to join our monthly trail walks:

<https://groups.google.com/group/bedfordma-trails>

South Road trail to the Minuteman

Bikeway, led by Joe Mazzeo. Volunteers trimmed the trail, removed weeds, and spread stone dust over the trail from the Minuteman Bikeway to South Road, providing improved access between Hartwell Town Forest and the Minuteman Bikeway.

(from left) Joe Mazzeo, Dick Duffy, Kurt Smith, Elaine Quinlan



Before and after views of South Road from the Minuteman Bikeway

Trail from Doris Road into the Lindau Farmland at Pine Hill, led by Michael Barbehenn. The Bedford DPW delivered 20 loads of mulch to Doris Road on March 10. In between loads, Paul Marcus moved the mulch across much of the field. On Saturday March 11, other volunteers finished spreading the mulch along the trail from Doris Road across the field to the main trail. Many thanks to Mark Pearson, Peter Desjardins, photographer Richard Krusemark who also pitched in, and neighbor Fred Levenstein for providing refreshment.



DPW dumped 20 dumptruck loads of wood chips (left), which were spread by Paul Marcus (center) on the deeply rutted and muddy field (right),



Michael, Peter and Mark spread wood chips from Doris Road to the main trail that connects to Fletcher Road and Pine Hill

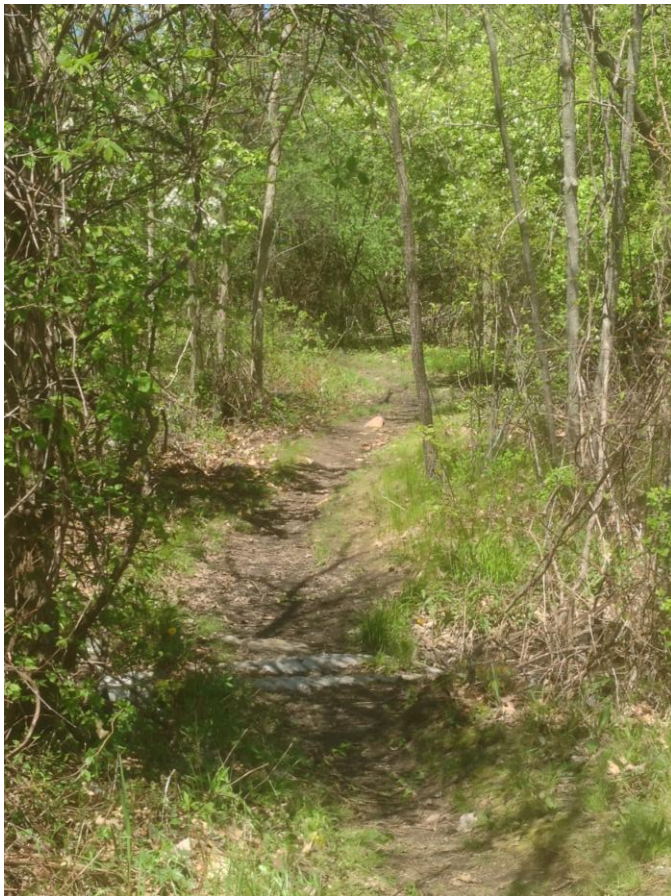
**Middle School/
Minuteman Bikeway
Extension Trail**, led by

Clem Larson.

Volunteers enjoyed a "Light Maintenance" Trail Walk, trimming the dirt trail to the John Glenn Middle School, and Elm Brook Conservation Area trails. Volunteers also cut back overgrown brush from the Railroad Avenue gravel parking area.



(from left) Steven Kissel, Clem Larson, Land Steward Amanda Hubbard, and Elaine Quinlan from Lexington Conservation





Cleared trail to John Glenn Middle School

*Before and after pictures of vine-free map kiosk
at the Minuteman Bikeway Extension parking lot*